

TANCO AUTOWRAP
200S MODEL 1994
OPERATORS HANDBOOK
AND
PARTS LIST
WD65-200-CS-MO594

TANCO AUTOWRAP CONSTANT INDEXING PRIMARY CHAIN DRIVE TENSIONING SYSTEM

CHAIN TENSIONING PROCEDURE

1. LOOSEN M10 BOLT SECURING BELT TENSIONER.
2. TENSION BELT BY ADJUSTING TENSIONER USING SPANNER IN DIRECTION OF ARROW "X" UNTIL SETTING OF 15-20 IS REACHED.
3. RE-TIGHTEN M10 BOLT TO SECURE TENSIONER IN POSITION.

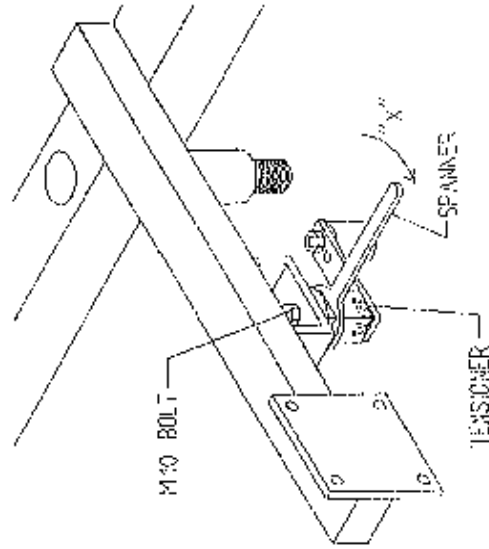
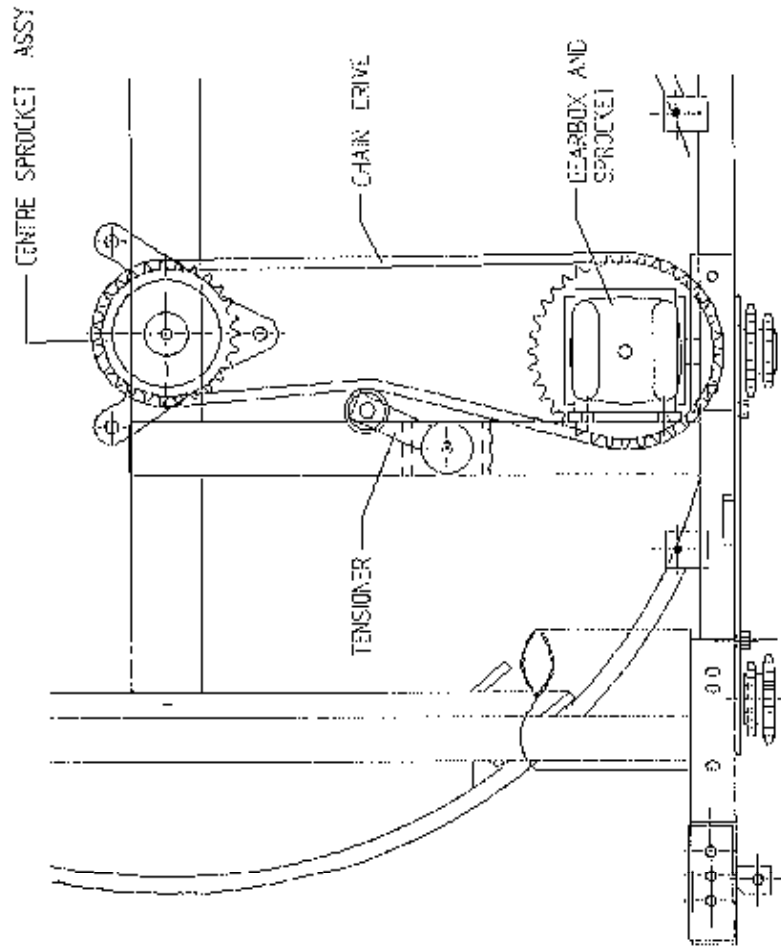


Fig. 2

TANCO AUTOWRAP 1994 DRIVE BELT TENSIONING SYSTEM

BELT TENSIONING PROCEDURE

1. CHECK THAT HYDRAULIC MOTOR MOUNTING BRACKET IS SECURE IN POSITION.
2. LOOSEN M10 BOLT WHICH CLAMPS BELT TENSIONER BODY TO MOTOR MOUNT.
3. TENSION BELT BY ADJUSTING TENSIONER USING SPANNER IN DIRECTION OF ARROW "X" UNTIL SETTINGS OF 30 IS REACHED.
4. RE-TIGHTEN M10 BOLT TO SECURE TENSIONER IN POSITION.

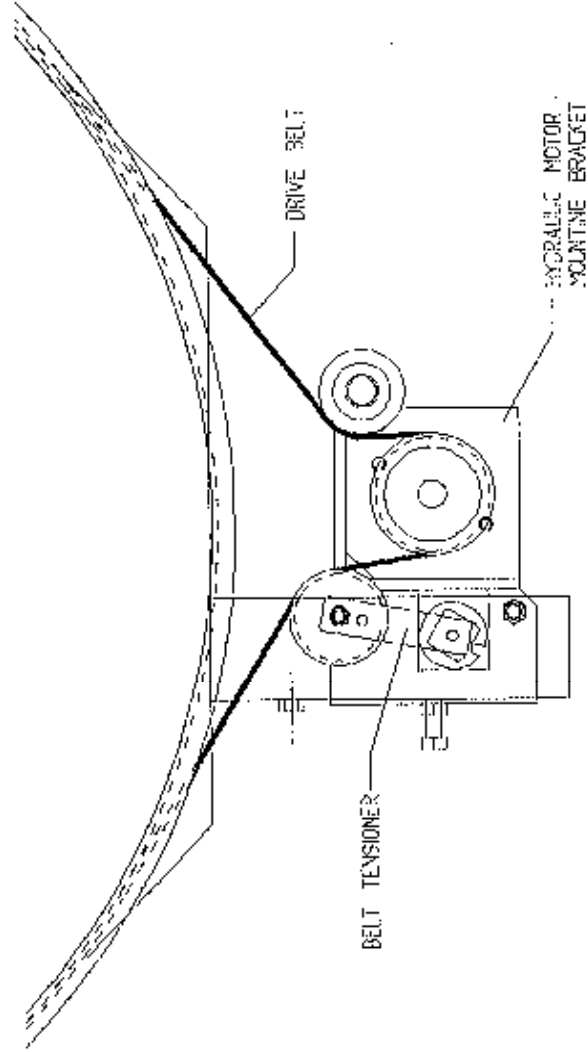
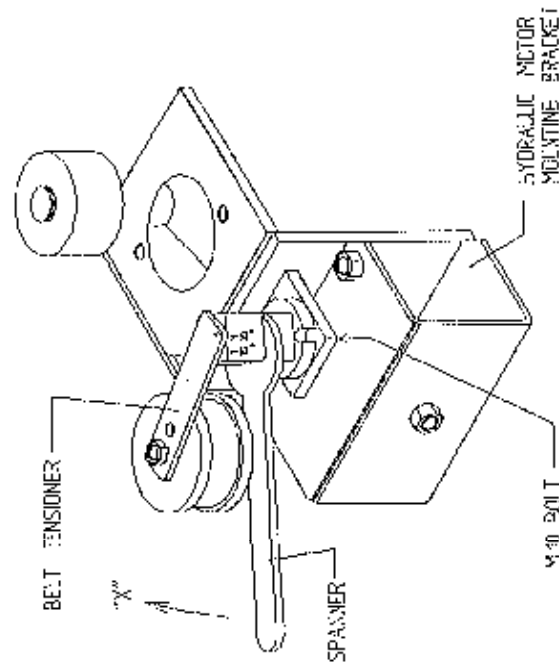
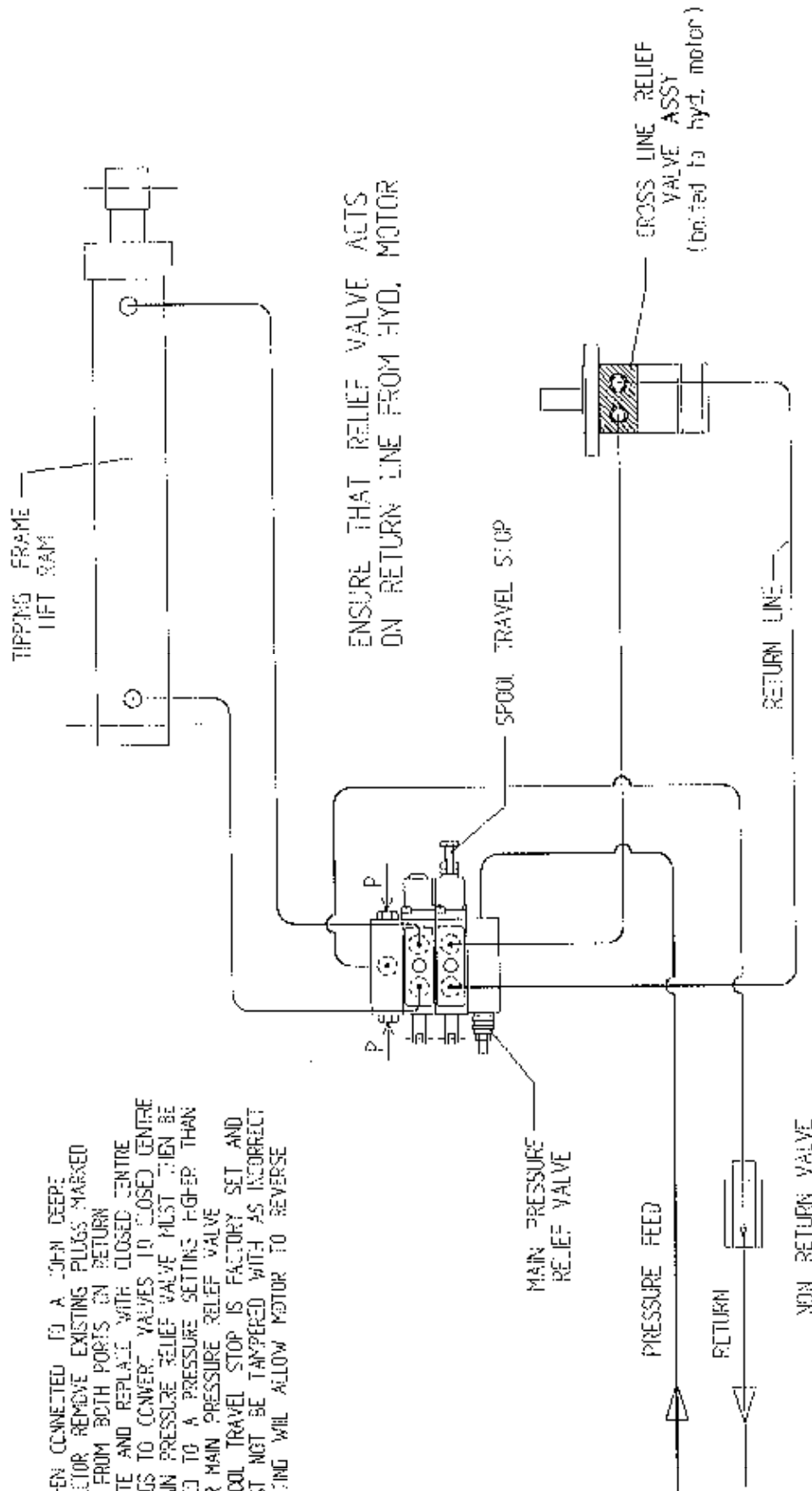


Fig. 3

TANCO AUTOWRAP 200S MODEL 1994 HYDRAULIC CIRCUIT DIAGRAM

NOTE
 (1) WHEN CONNECTED TO A JOHN DEERE TRACTOR REMOVE EXISTING PLUGS MARKED "P" FROM BOTH PORTS ON RETURN PLATE AND REPLACE WITH CLOSED CENTRE PLUGS TO CONVERT VALVES TO CLOSED CENTRE. THE MAIN PRESSURE RELIEF VALVE MUST THEN BE ADJUSTED TO A PRESSURE SETTING HIGHER THAN TRACTOR MAIN PRESSURE RELIEF VALVE.
 (2) SPOOL TRAVEL STOP IS FACTORY SET AND MUST NOT BE TAMPERED WITH AS INCORRECT SETTING WILL ALLOW MOTOR TO REVERSE.



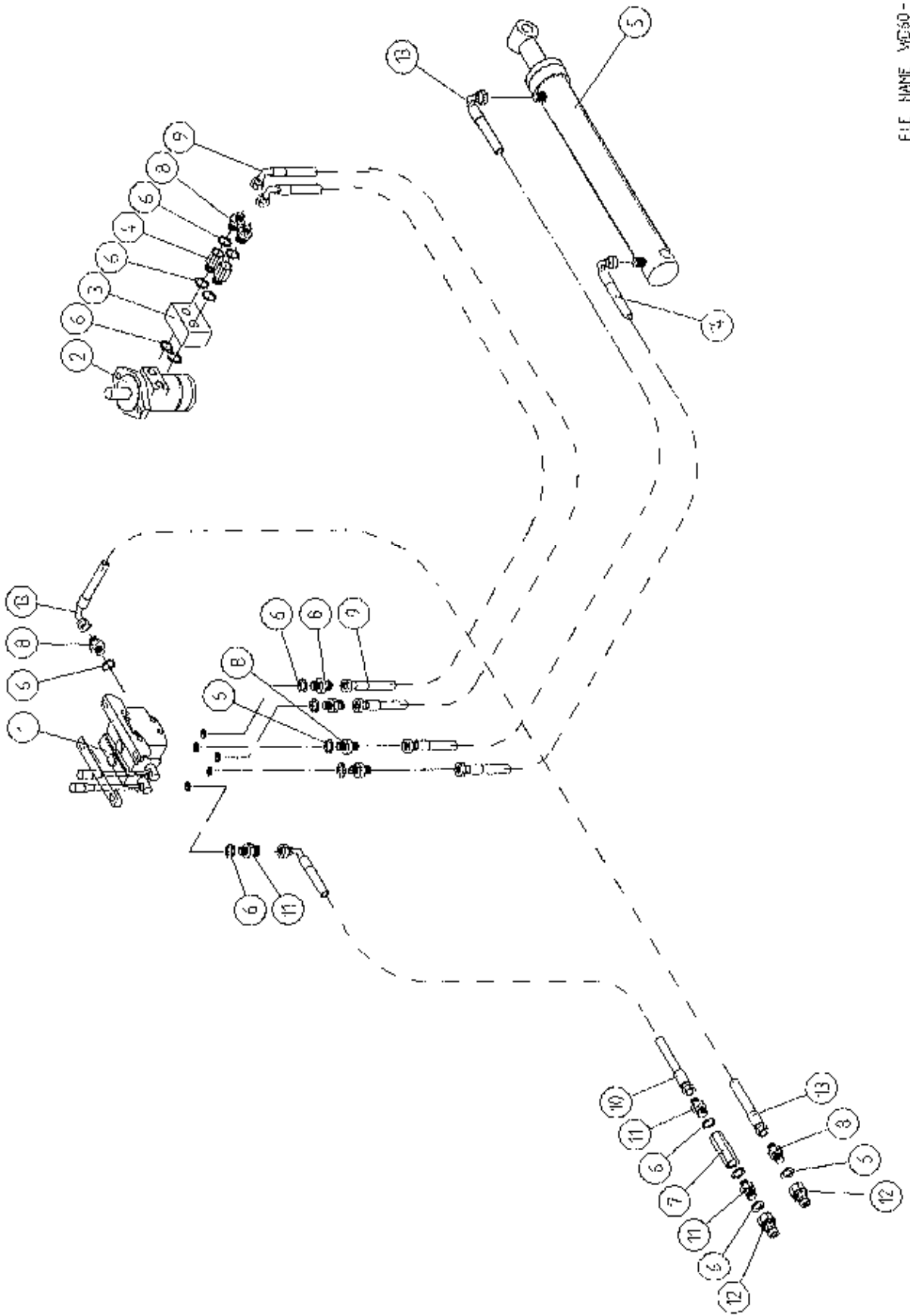
2

2

2

2

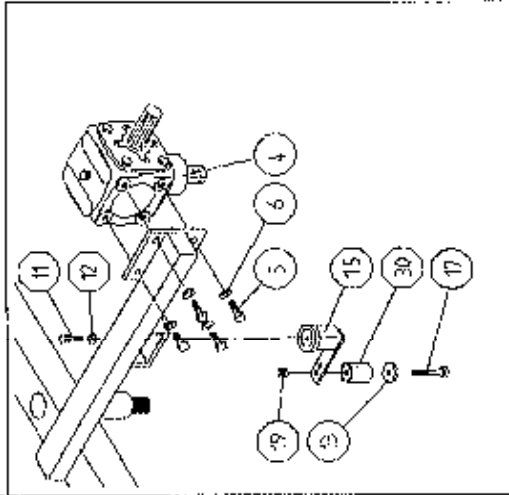
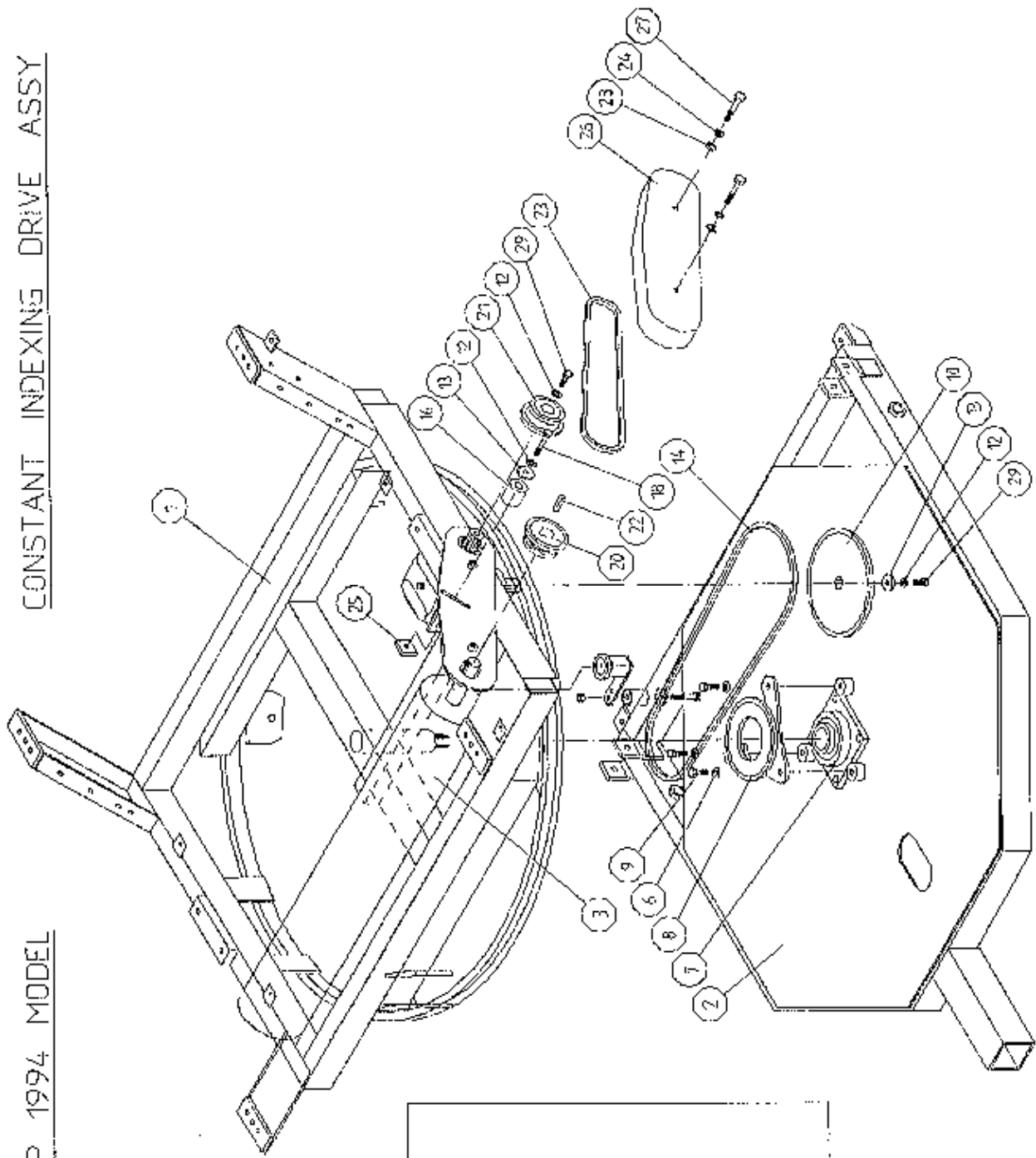
TANCO AUTOWRAP 200S MODEL (3 pt LINKAGE) 1994
 HYDRAULIC COMPONENTS



WD60-PL24
TANCO AUTOWRAP 200 S MODEL (3PT LINKAGE) 1994
PARTS LIST
HYDRAULIC COMPONENTS (DIN)

ITEM NO.	DESCRIPTION	QTY.	PART-NO
1	2 BANK SPOOL VALVE C/W LEVERS	1	Z01-03-018D2
2	HYDRAULIC MOTOR (C.L.)	1	Z01-02-AR75
3	CROSS LINE RELIEF VALVE	1	Z01-03-002
4	1/2" BSP BOTTOM BANJO BOLT (SPECIAL)	2	Z01-03-002B
5	HYD. RAM (FOR TIPPING FRAME)	1	Z01-01-AR687
6	1/2" DOWTY WASHER	15	Z01-04-03
7	1/2" NON RETURN VALVE	1	Z01-03-017
8	1/2" x 3/8" ADAPTOR	8	Z01-06-06-08
9	108" ST/90 3/8" D/W HOSE	2	Z38-R2-108S9
10	84" ST/90 1/2" S/W HOSE	1	Z12-R1-84-S9
11	1/2" x 1/2" ADAPTOR	3	Z01-06-08-08
12	1/2" MALE END Q/R COUPLING	2	Z01-15-081
13	84" ST/90 3/8" D/W HOSE	2	Z38-R2-84-S9
14	72" ST/90 3/8" D/W HOSE	1	Z38-R2-72-S9

TANEO AUTOWRAP 1994 MODEL
CONSTANT INDEXING DRIVE ASSY

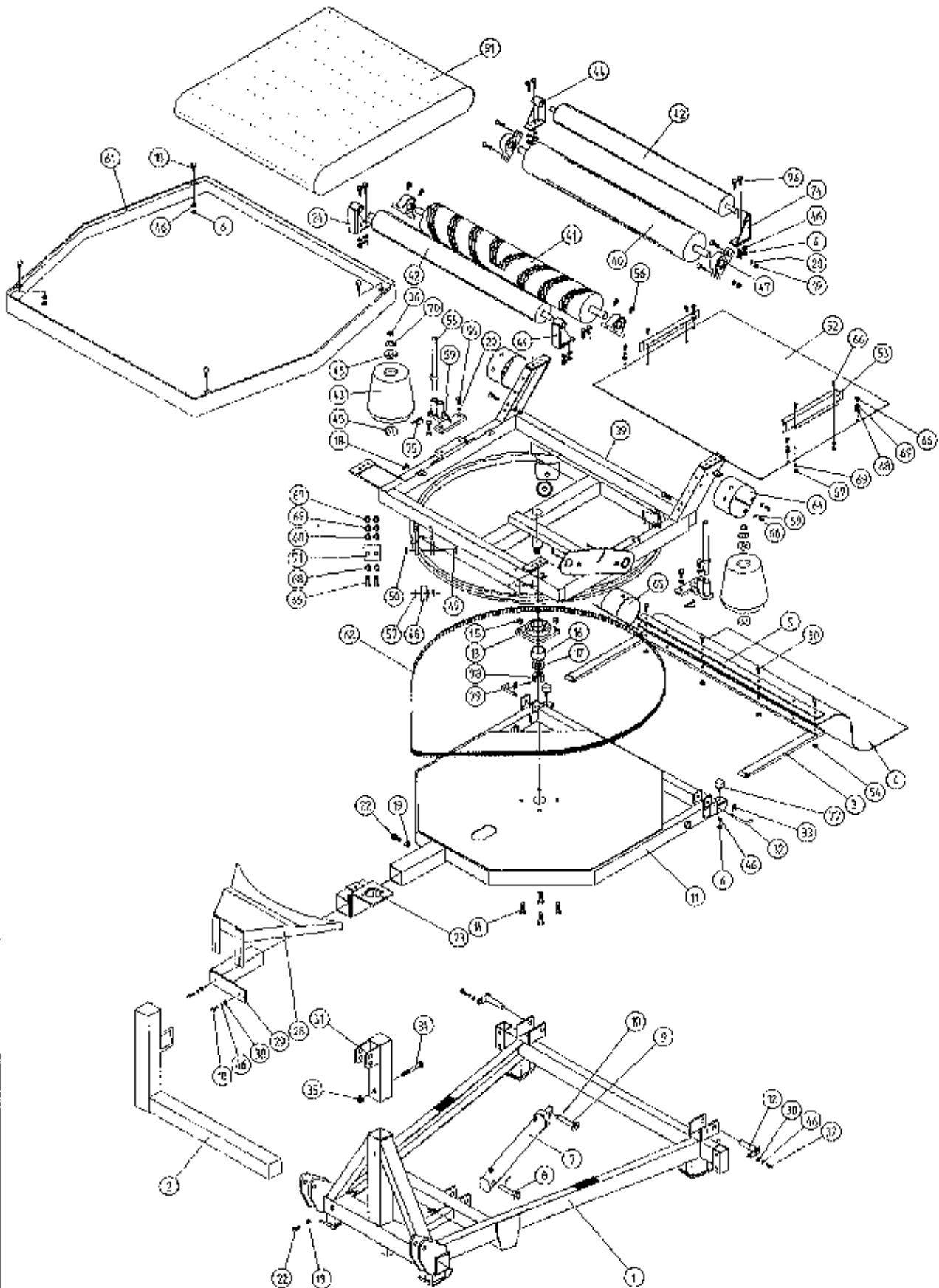


TANCO AUTOWRAP
CONSTANT INDEXING DRIVE ASSEMBLY

PARTS LIST

ITEM NO.	DESCRIPTION	QTY.	PART-NO
1	TURNTABLE ASSY.	1	WD60-TAC
2	TIPPING FRAME ASSY.	1	WD60-TFC
3	DRIVE ROLLER ASSY.	1	WD65-BRD
4	GEAR BOX	1	Z01-25-300
5	M12 HEX HD SET x 30mm LONG	4	Z26-082S
6	12mm DIA SPRING WASHER	7	Z12-02-12
7	2" DIA FLANGE BEARING	1	Z06-49EC
8	CENTRE SPROCKET ASSY 27 TOOTH	1	WD60-CSA
9	M12 HEX HD SET x 25mm LONG	3	Z26-081S
10	36 TOOTH SPROCKET	1	Z06-D65-36S
11	M10 HEX HD SET x 25mm LONG	1	Z26-0611S
12	10mm DIA SPRING WASHER	4	Z12-02-10
13	RETAINING COLLAR	3	WD623-071
14	CHAIN 3/4" PITCH X 87 PITCHES	1	Z09-AW-4
15	ROSTA TENSIONING UNIT ARM	1	Z06-454
16	CHAIN TENSIONER	1	WD65-CT
17	M10 HEX HD BOLT x 65MM LONG	1	Z26-0671B
18	M10 HEX HD BOLT x 80MM LONG	1	Z26-0691B
19	M10 LOCKNUT	1	Z23-10
20	SPROCKET DOUBLE SIMPLEX 13T/16T KEYED	1	Z06-D65-1316K
21	SPROCKET DOUBLE SIMPLEX 13T/16T SPLINED	1	Z06-D65-1316S
22	KEY 5/16" x 5/16" x 32mm LONG	1	WD623-K32
23	CHAIN 3/4" PITCH X 62 PITCHES	1	Z09-AW-3
24	1/2" DIA STAR WASHER	1	Z10-01-121
25	LOCKING FLAT	1	WD623-060
26	CHAIN GUARD	1	WD60-CGC
27	M10 HEX HD SET x 70mm LONG	2	Z26-068B
28	10mm DIA FLAT WASHER	2	Z10-02-10
29	M10 HEX HD SET x 30mm LONG	2	Z26-062S
30.	CHAIN TENSIONER	1	WD60-CT

TANCO AUTOWRAP 200 S MODEL 1994

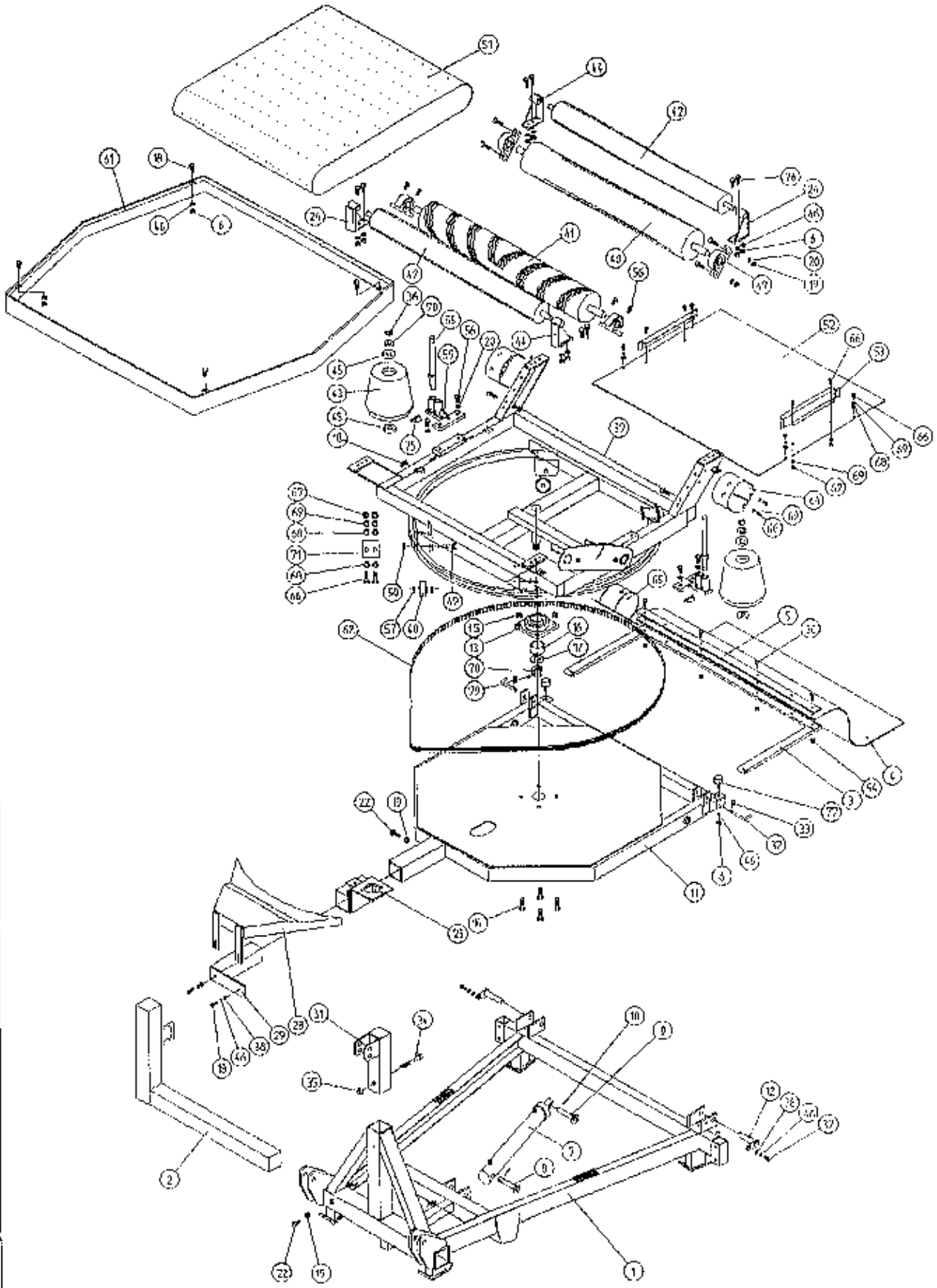


**TANCO AUTOWRAP 200S MODEL (3PT. LINKAGE) 1994
MAIN ASSEMBLY**

PARTS LIST

ITEM NO.	DESCRIPTION	QTY.	PART-NO.
1	3PT.LINKAGE FRAME ASSEMBLY	1	WD63-MF
2	DISPENSER BRACKET LOWER SUPPORT	1	WD63-DMLH
3	RUBBER MAT MOUNTING FRAME ASSEMBLY	1	WD63-MMF
4	RUBBER MAT	1	Z05-02AWM
5	CLAMPING PLATE	1	WD63-1300
6	M10 HEX NUT	18	Z18-10
7	HYD. RAM	1	Z01-01-AR687
	RAM BOTTOM PIVOT	1	Z03-02-330
9	RAM TOP PIVOT PIN	1	Z03-03-50
10	2" X 1/4" SPLIT PIN	2	Z03-21-29
11	TIPPING FRAME ASSY.	1	WD60-TFC
12	TIPPING FRAME PIVOT PIN C/W GREASE NIPPLE	2	Z03-01-905 Z39-60
13	2" DIA FLANG BEARING C/W CAM LOCK COLLAR	1	Z06-49-ECC
14	5/8" UNF HEX HD SET X 2" LONG	4	Z30B-064
15	5/8" UNF LOCKNUTS	4	Z20-10
16	SPACER	1	WD63-1043
17	RETAINING COLLAR	1	WD60-770
18	M10 HEX HD SET X 30mm LONG	11	Z26-062S
19	M12 HEX NUT	9	Z18-12
20	12mm DIA SPRING WASHER	12	Z12-02-12
22	M12 HEX HD SETS X 30mm LONG	1	Z26-082S
23	HYD. MOTOR MOUNTING ASSY.	1	WD60-HMB
24	ROLLER MOUNTING BRACKET	2	WD60-TRMBL
28	HYD. MOTOR GUARD ASSY	1	WD60-HMG
29	HYDRAULIC MOTOR GUARD MOUNTING BRACKET	1	WD60-HAMB
30	M8 HEX HD BOLT X 50mm LONG	4	Z26-045B
31	TOP LINK BRACKET ASSEMBLY	1	WD63-TLB
32	BISSEL PIN	2	Z03-22-AW100
33	4MM "R" CLIP	2	Z36-02
34	M16 HEX HD BOLT X 120mm LONG	1	Z26-134B
35	M16 LOCKNUTS	1	Z23-16
36	CIRCLIP	2	Z28-525
37	M10 HEX HD. SET X 25mm LONG (TUFLOCK)	2	Z26-061S
38	10mm DIA MACHINED FLAT WASHER	4	Z11-02-10
39	TURN TABLE ASSY.	1	WD60-TAC
40	BIG ROLLER ASSY IDLER	1	WD65-BRI
41	BIG ROLLER ASSY. DRIVER	1	WD65-BRD
42	SMALL ROLLER ASSY	2	WD60-SMR
43	SIDE ROLLER	2	Z06-AWR
44	ROLLER MTG. BRACKET	2	WD60-TRMBR
45	BEARING (25mm I.D.)	4	Z06-AWRB-93
46	10mm DIA SPRING WASHERS	23	Z12-02-10
47	1 1/4" PILLOW BLOCK BEARING C/W CAM LOCK COLLAR	4	Z06-485
48	SUPPORT WHEELS (4" DIA)	4	Z06-466
49	AXLE ASSY. C/W GREASE NIPPLE	4	Z03-22-AW/AX Z39-60

TANCO AUTOWRAP 200 S MODEL 1994

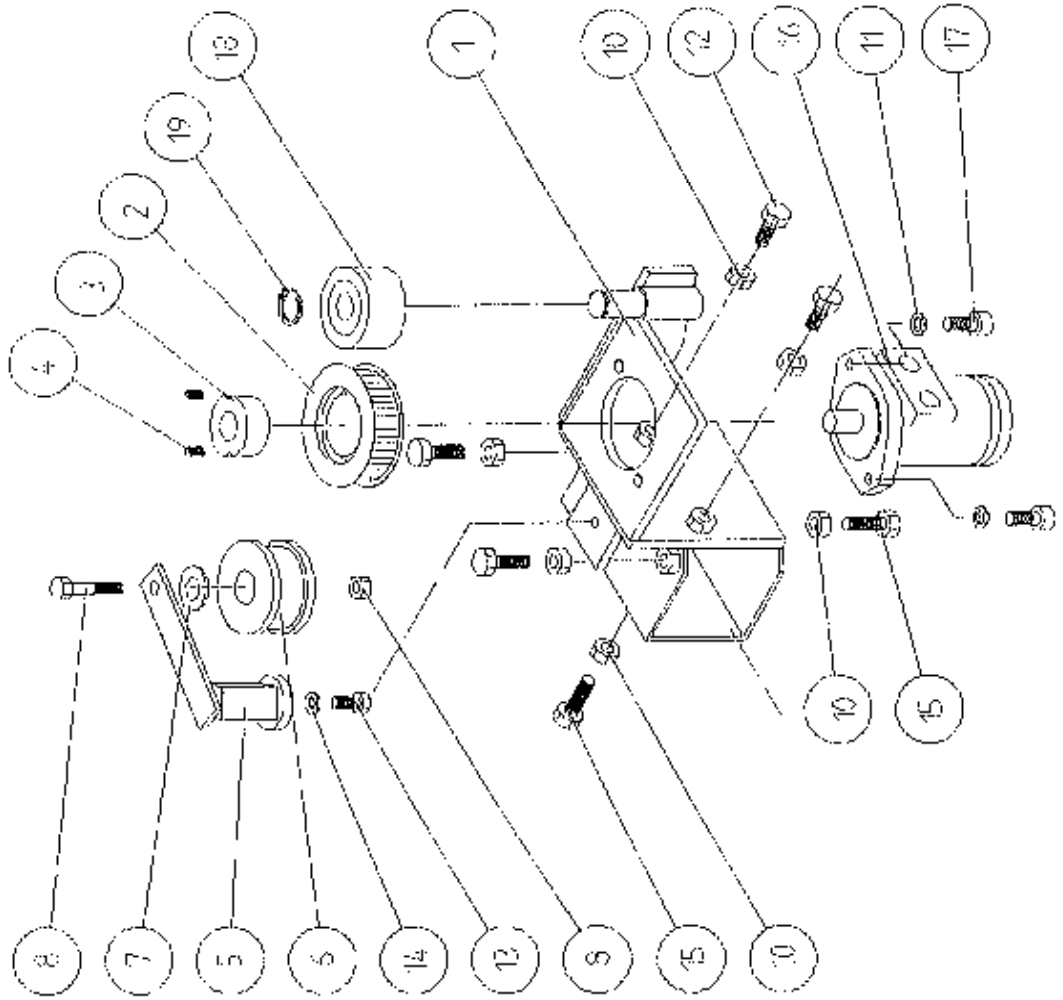


**TANCO AUTOWRAP 200S MODEL (3PT. LINKAGE) 1994
MAIN ASSEMBLY**

PARTS LIST

50	M20 LOCKNUTS	4	Z23-20
51	1 METER WIDE X 89 1/2" LONG X FLAT BELT	1	Z05-02AWV
52	TURN TABLE COVER PLATE	1	WD60-093
53	BELT GUIDE ASSY	2	WD625-BG
54	M8 LOCKNUTS	4	Z23-08
55	ROLLER SHAFT ASSEMBLY	2	WD60-RSA
56	M12 HEX HD. SETS X 40mm LONG	12	Z26-084S
57	SPACER	8	WD60-198
58	1/8" B.S.P. ST GREASE NIPPLE	4	Z39-60
59	END ROLLER MOUNTING BRACKET	2	WD60-ERM
61	MAIN GUARD ASSY	1	WD60-MG
62	170" LONG X 1/2 PITCH X 1" WIDE TOOTHED BELT	1	Z05-02-AW20
64	GRASS GUARD (CLOSED TYPE)	3	Z49-98
65	GRASS GUARD (OPEN TYPE)	1	Z49-981
66	M8 HEX HD SETS X 20mm LONG	20	Z26-039S
67	M8 HEX NUTS	14	Z18-08
68	8mm DIA FLAT WASHERS (MUD FLAP)	20	Z11-02-081
69	8mm DIA SPRING WASHERS	20	Z12-02-08
70	THRUST WASHER	2	WD60-292
71	SCRAPER	2	WD60-705
75	10mm "D" LINCH PIN	2	Z38-03
76	M10 HEX HD SET X 35mm LONG	8	Z26-063S
77	BUFFER 56mm DIA X 40mm LONG	2	Z40-20
78	1 1/4" UNC HEX NUT	1	Z18-300
79	M8 GRUB SCREW	2	Z28-006

TANCO AUTOWRAP 1994 MODEL
HYDRAULIC MOTOR DRIVE ASSEMBLY



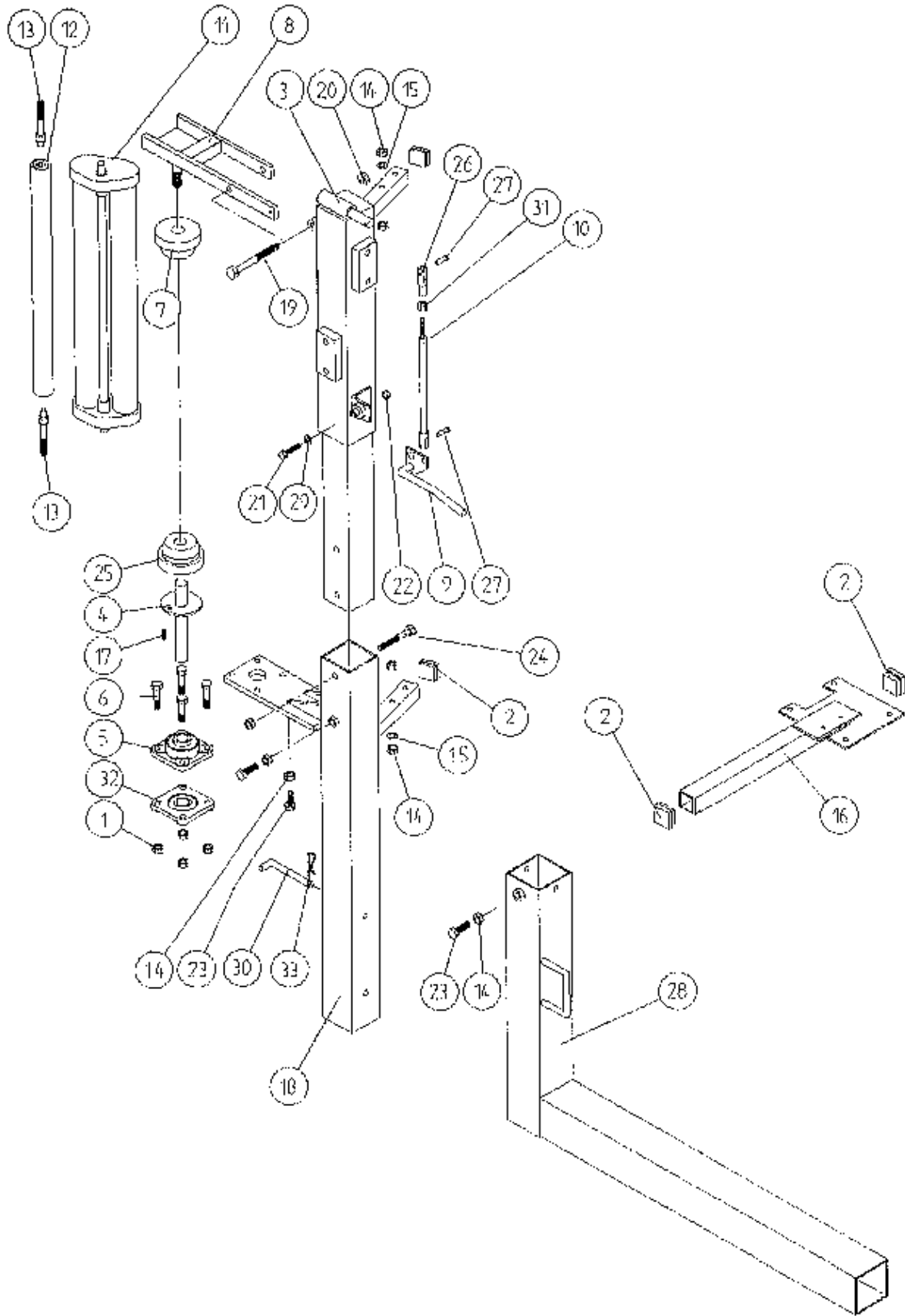
WD60-PL27

TANCO AUTOWRAP 1994 MODEL
HYDRAULIC MOTOR DRIVE ASSEMBLY

PARTS LIST

ITEM NO.	DESCRIPTION	QTY.	PART-NO.
1.	HYDRAULIC MOTOR MOUNTING ASSY.	1	WD65-HMB
2.	4" DIA X 1/2" PITCH TOOTHED PULLEY	1	Z09-005-AW1
3.	TAPER LOCK BUSH TO SUIT 1" DIA SHAFT	1	Z09-005-AW2
4.	M10 STUDS X 15MM	2	Z28-01
5.	ROSTA TENSIONING UNIT ARM	1	Z06-454
6.	STEPPED ROLLER C/W BEARINGS	1	Z06-456
7.	SPACER	1	WD60-798
8.	M10 HEX HD BOLT X 60MM LONG	1	Z26-067B
9.	M10 LOCKNUT	1	Z23-10
10.	M12 HEX NUT	6.	Z18-12
11.	12MM DIA SPRING WASHER	2	Z12-02-12
12.	M12 HEX HD SET X 30MM LONG	2	Z26-082S
13.	M10 HEX HD SET X 25MM LONG (TUFLOCK)	1	Z26-061S
14.	10MM DIA SPRING WASHER	1	Z12-02-10
15.	M12 HEX HD SET X 40MM LONG	6	Z26-084S
16.	HYDRAULIC MOTOR C.L.	1	Z01-02-AR75
17.	M12 SOCKET HD SCREW X 30MM LONG	2	Z13-6-12X30
18.	ROLLER C/W BEARINGS	1	Z06-457
19.	CIRCLIP	1	Z28-525

TANCO AUTOWRAP 200S MODEL 1994
FILM DISPENSER SYSTEM



FILE NAME WD.60-91.15

TANCO AUTOWRAP 200S MODEL 1994FILM DISPENSING SYSTEMPARTS LIST

ITEM NO.	DESCRIPTION	QTY.	PART-NO
1.	M10 LOCKNUTS	4	Z23-10
2.	PLASTIC CAPS (T SUIT 40 X 40 X 3 RHS)	4	Z32-07
3.	DISPENSER MOUNTING (UPPER)	1	WD60-DMUH
4.	FILM SPOOL ASSEMBLY	1	WD60-SPO
5.	1" DIA FLANGE BEARING C/W CAM LOCK	1	Z06-48EC
6.	M10 HEX HD BOLT X 50MM LONG	4	Z26-066B
7.	CONE (TOP) C/W BALL BEARING	1	Z06-45-01
8.	CLAMP ASSEMBLY	1	WD60-DMCA
9.	LEVER ASSEMBLY	1	WD60-DMLA
10.	LINK ASSEMBLY	1	WD60-DMLK
11.	FILM DISPENSER UNIT MK 6 (70% STRETCH)	1	D613
12.	SLAVE ROLLER ASSY (PLASTIC COATED)	1	WD60-SLR
13.	SLAVE ROLLER PIVOT	2	WD60-SRS
14.	M12 HEX NUTS	7	Z18-12
15.	12mm DIA SPRING WASHER	2	Z12-02-12
16.	SPOOL VALVE MOUNTING PLATE ASSEMBLY	1	WD63-SVM
17.	1/4" DIA TENSION X 3/4" LONG	1	Z03-20-062
18.	DISPENSER MOUNTING (LOWER)	1	WD60-DMLH
19.	M12 HEX HD BOLT X 130M LONG	1	Z26-094B
20.	M12 LOCKNUT	3	Z23-12
21.	M8 HEX HD BOLT X 35MM LONG	1	Z26-042S
22.	M8 LOCKNUT	1	Z23-08
23.	M12 HEX HD SET X 30MM LONG	3	Z26-082S
24.	M12 HEX HD BOLT X 100MM LONG	1	Z26-092B
25.	CONE (BOTTOM)	1	Z06-45-02
26.	CLEVIS (M10)	1	Z49-335
27.	PIN (5/16" DIA) C/W CLIP	2	Z49-337
28.	4MM "R" CLIP	1	Z36-02
29.	8mm DIA MUD FLAP WASHER	1	Z11-02-081
30.	BISSEL PIN X 110M LONG	1	WD60-874
31.	5/16" UNF HEX NUT	1	Z15-05
32.	1" DIA FLANGE BEARING	1	Z06-48